

FIG. AA

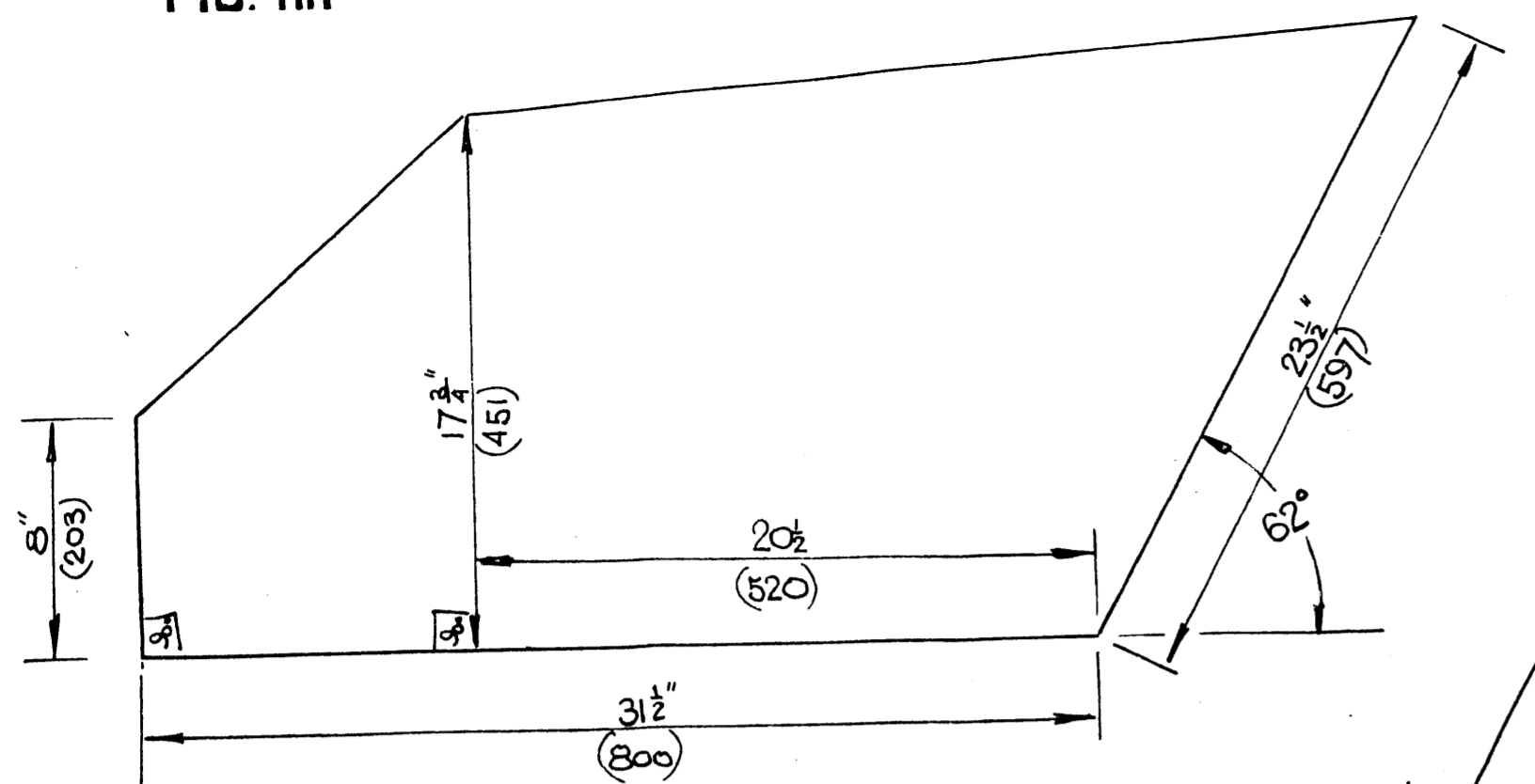


FIG. BB

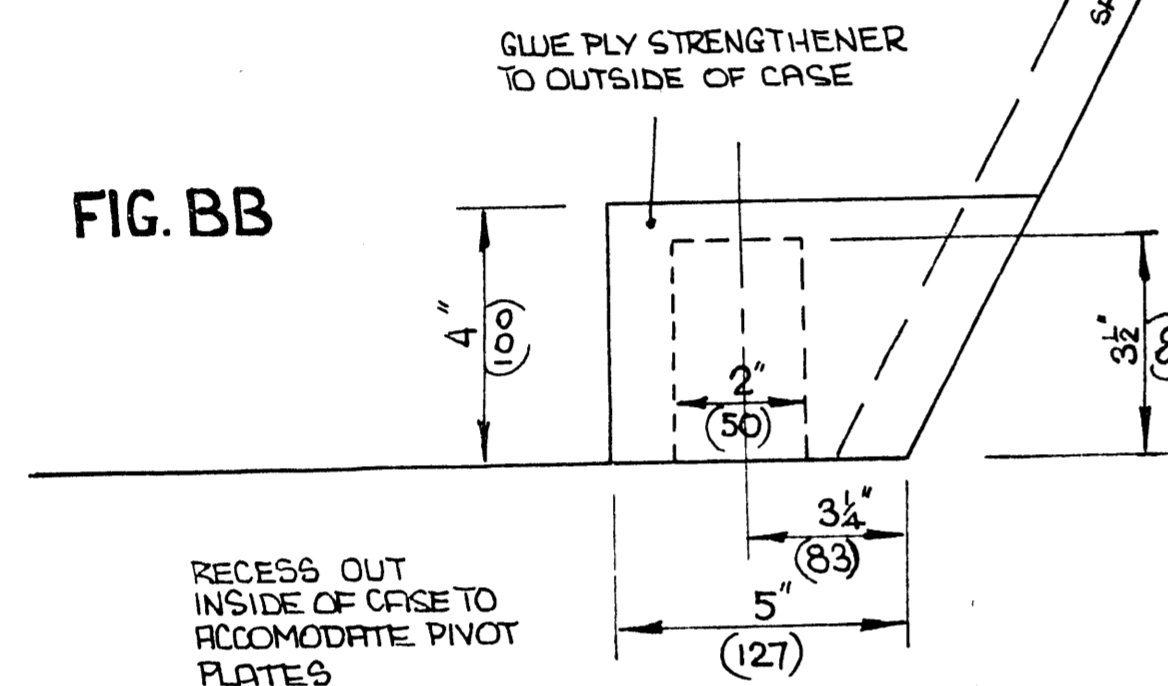


FIG. CC

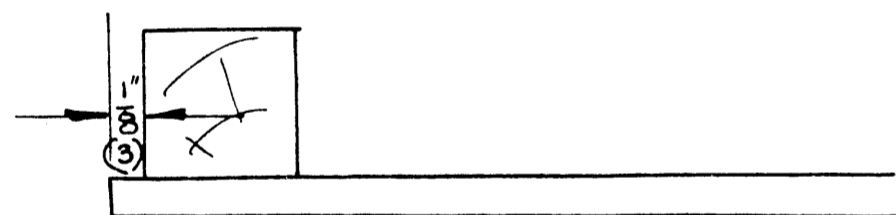


FIG. DD

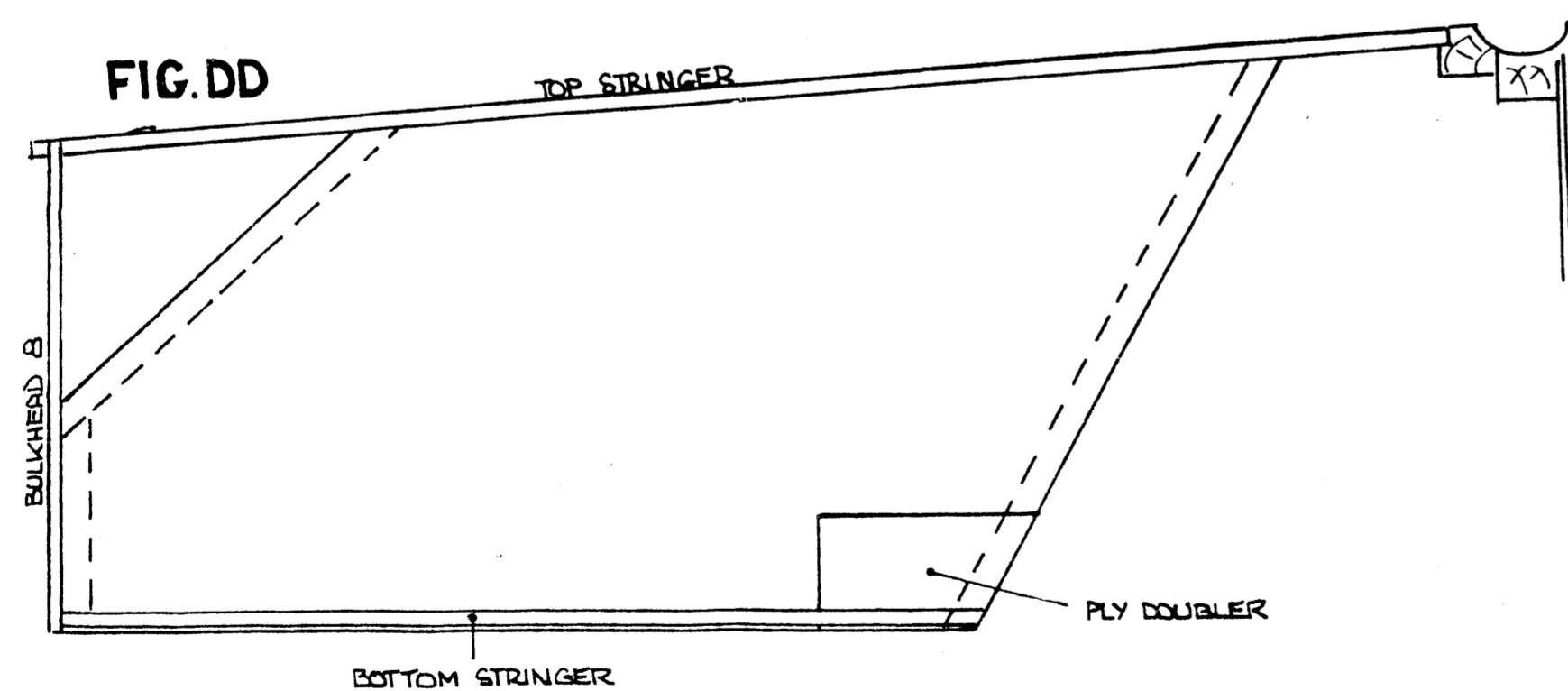
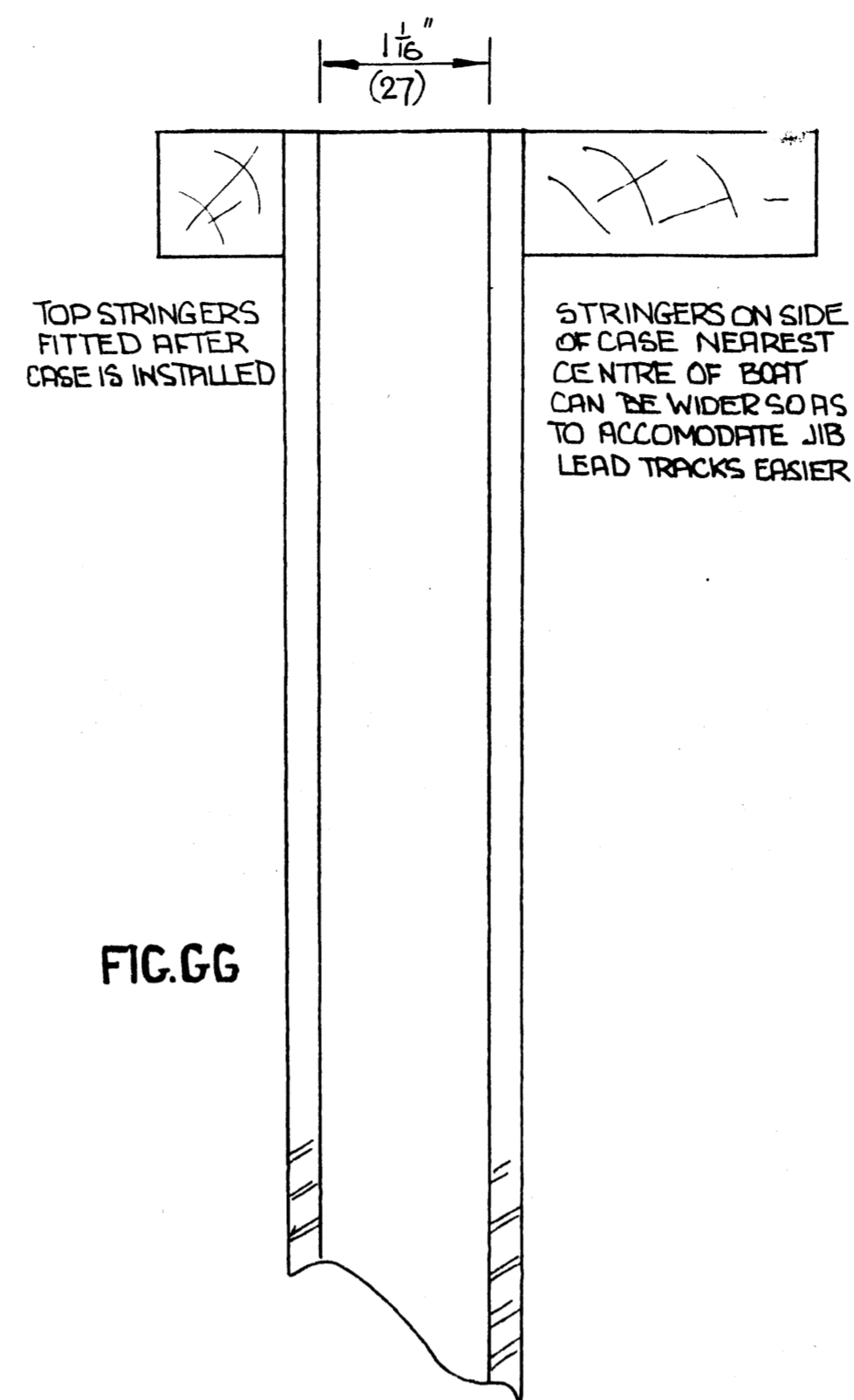


FIG. GG



PIVOT PLATES 16 G S/S

4 OFF

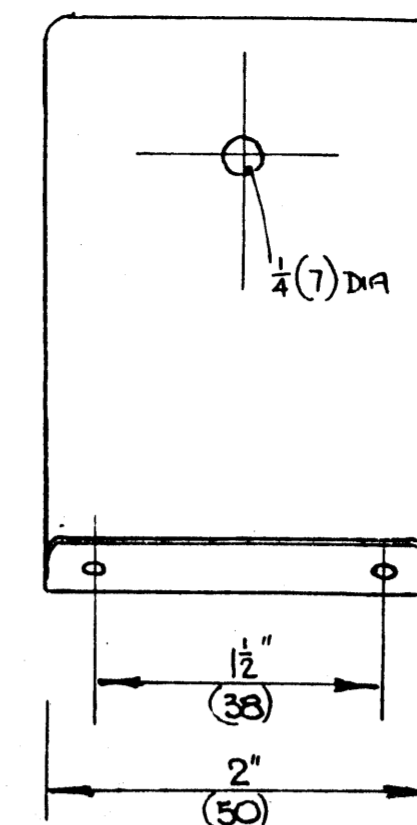
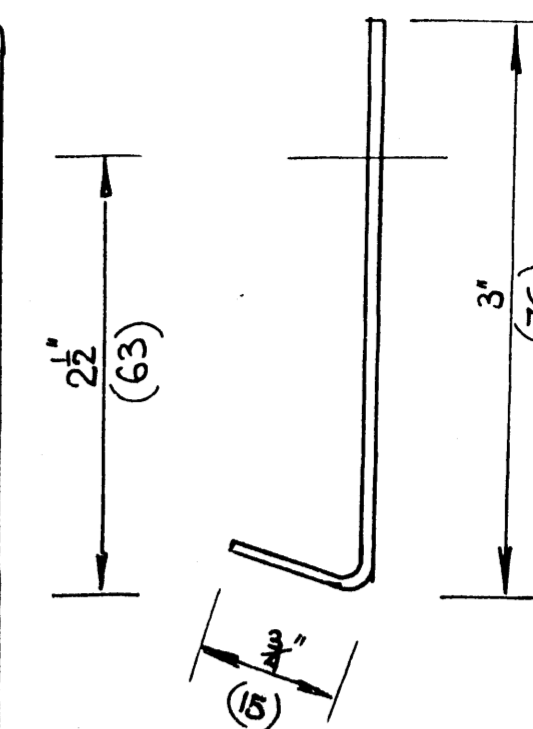
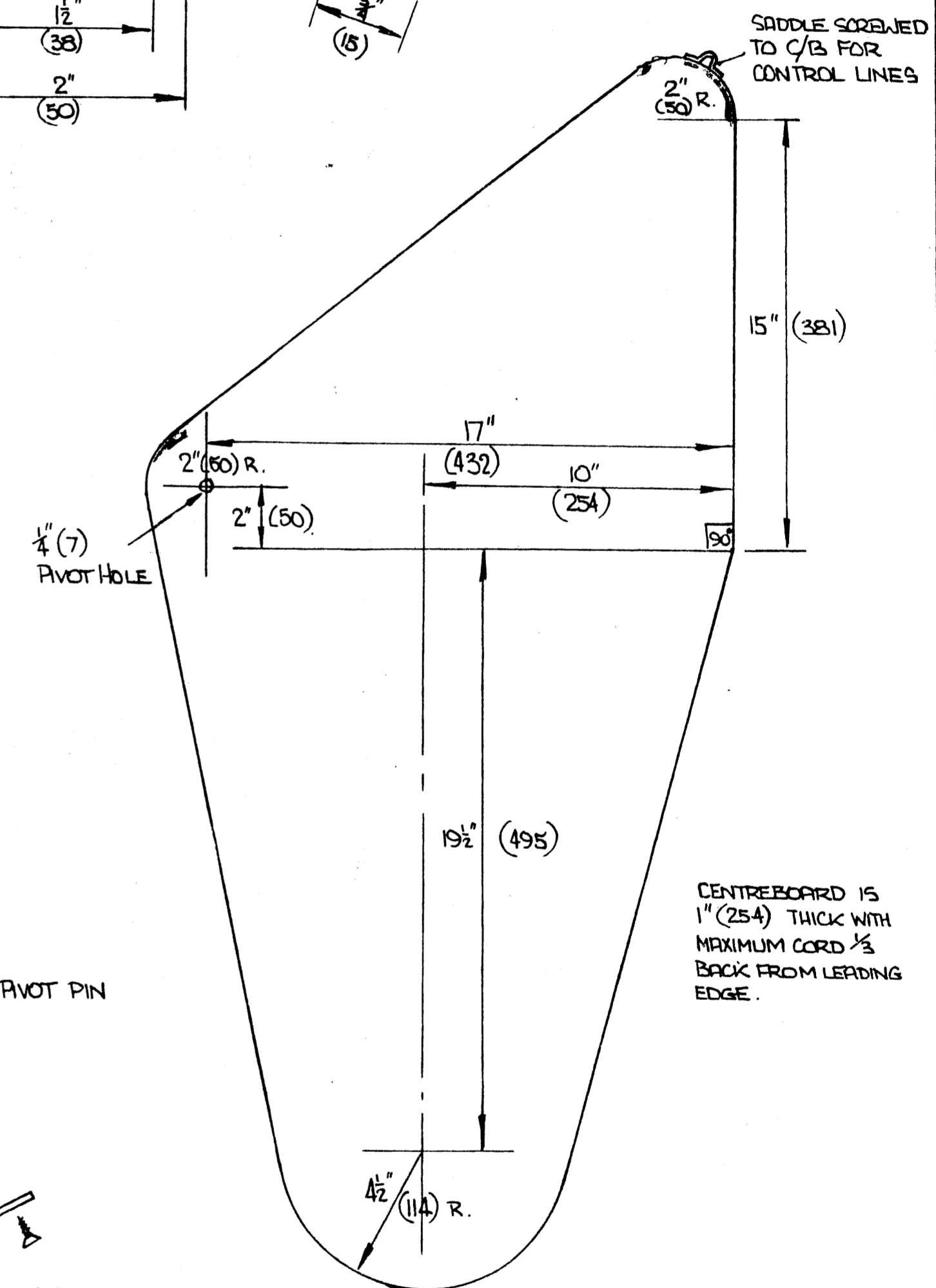


FIG. EE

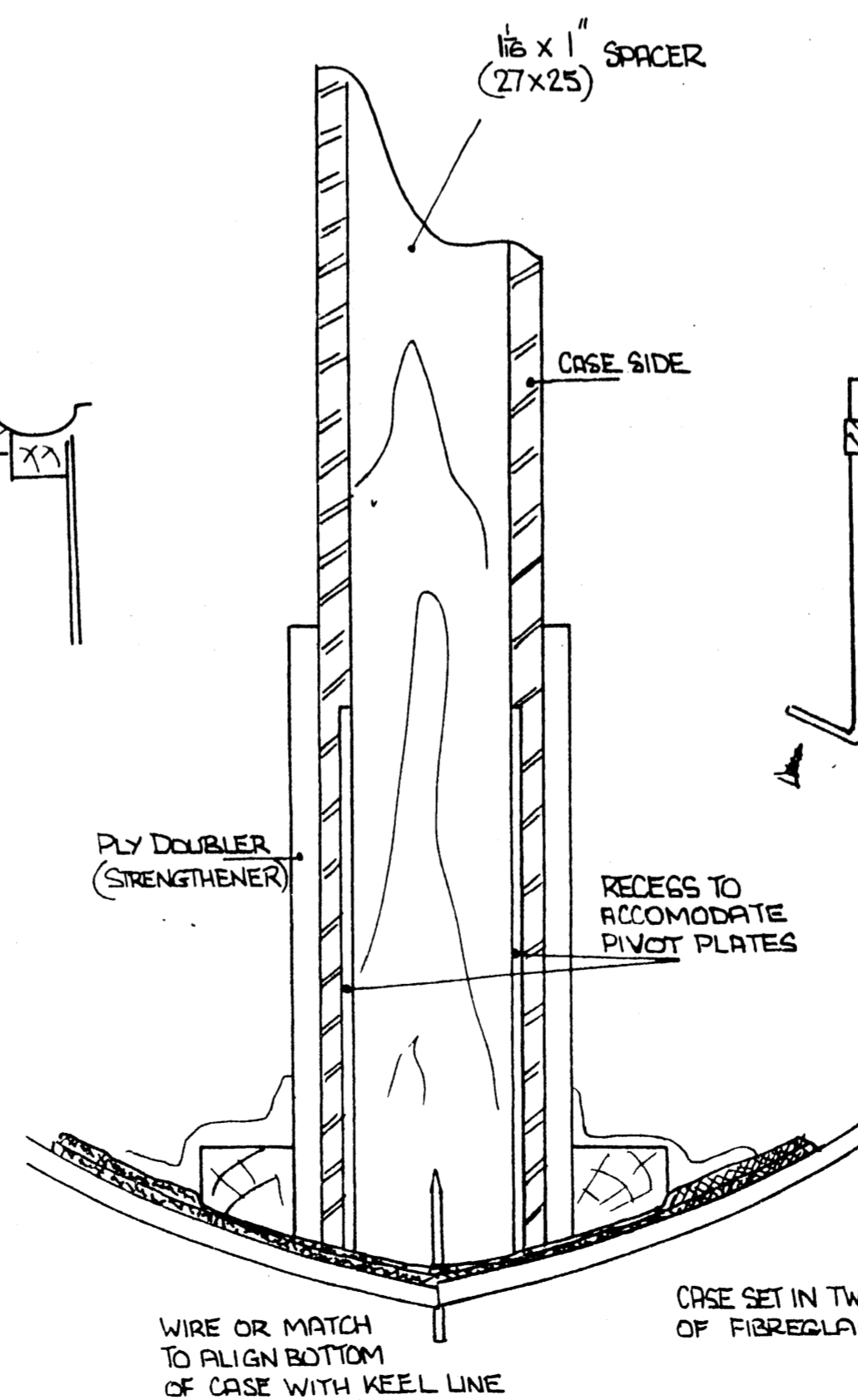


PIVOT PIN HAS TO
BE NEAT PUSH FIT
INTO PIVOT PLATE
RECESS IN CASE

SADDLE SCREWED
TO C/B FOR
CONTROL LINES



CENTREBOARD IS
1" (254) THICK WITH
MAXIMUM CORD $\frac{1}{8}$
BACK FROM LEADING
EDGE.



PIVOT PLATES AND BOARD
SLIDE UP INTO CASE AND
ARE FIXED WITH 4 SHORT
COUNTERSUNK SCREWS

PAGE
5

PLAN NO

351